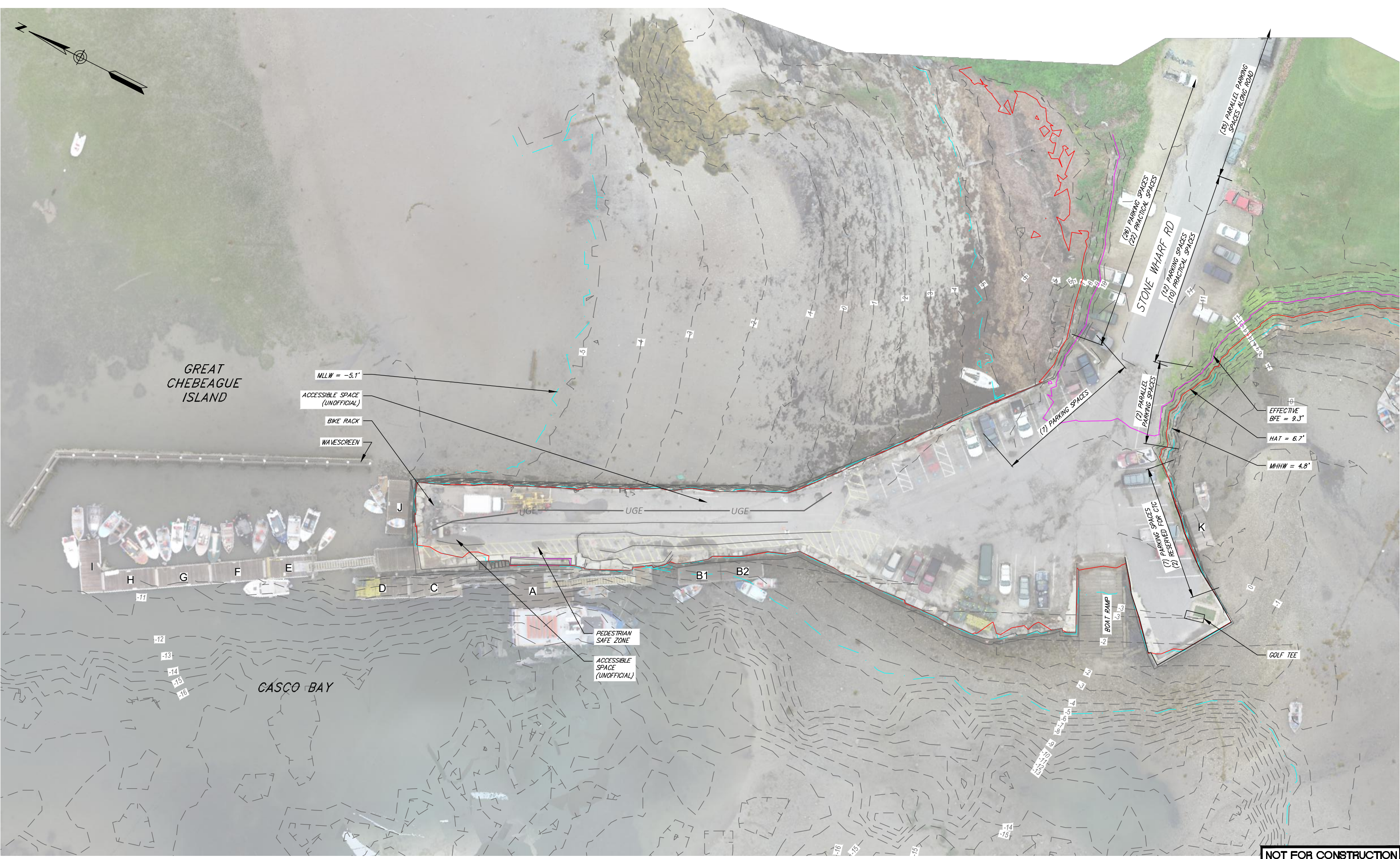


B:\WORKING\WRIGHT-PERCEY\21-07 STONE PIER CONDITION ASSESSMENT-CHEBEAGUE ISLAND\CAD\STONE PIER CONFIGURATION | 1.2 | 6/24/2022 4:50:57 PM | JDOYLE
LAST SAVED BY: JDOYLE 6/24/2022 4:26 PM



EXISTING PIER CONFIGURATION

NOTE: FLOAT LABELING IS PER HARBOR ORDINANCE.

NOT FOR CONSTRUCTION

