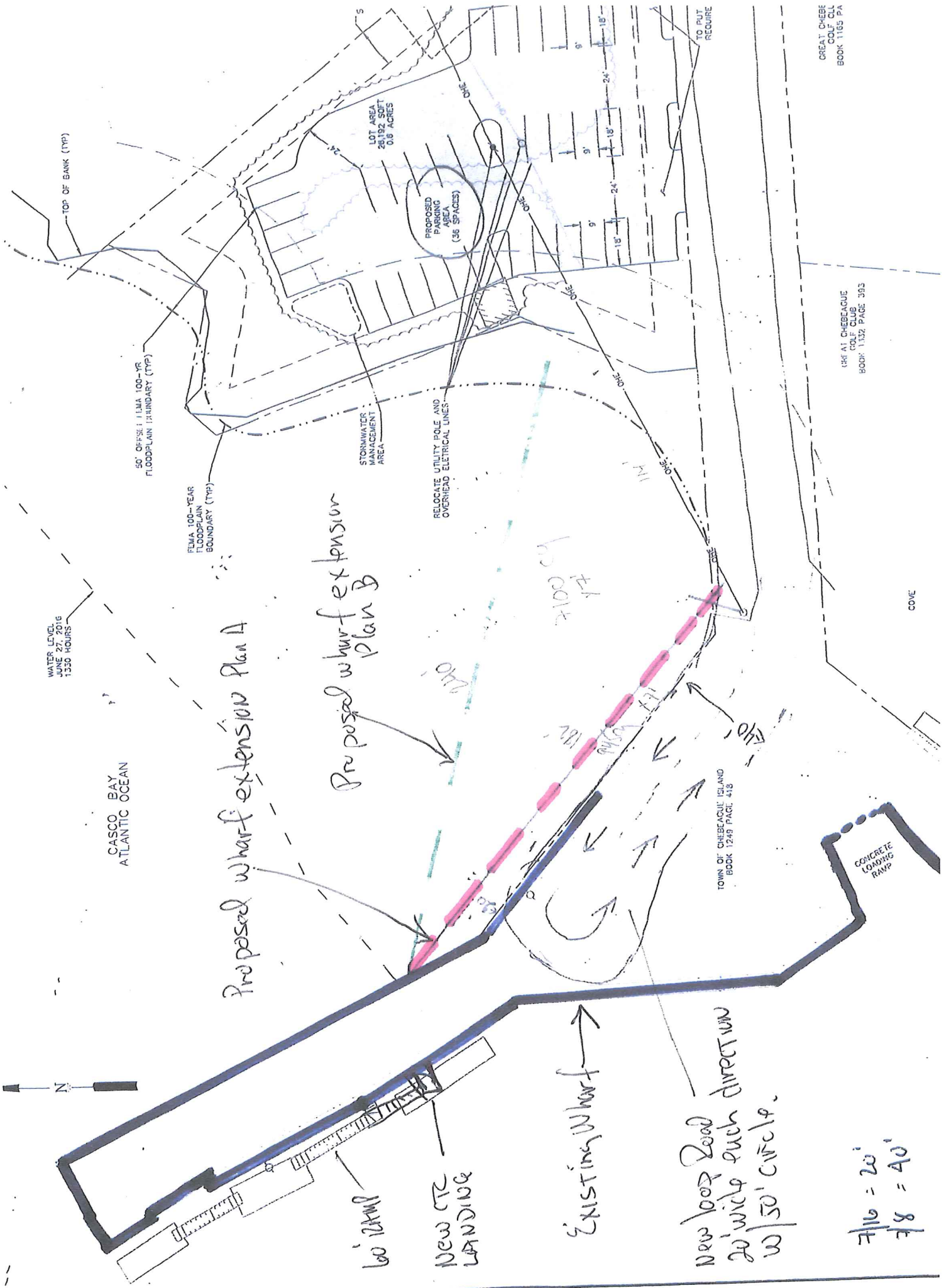


### Possible Stone Wharf Solutions

1. Have an engineering study done to determine the condition of the existing wharf and any repairs (if needed) to be done and at what cost.
2. Raise the perimeter of the existing wharf 12-15 inches, fill in with approximately 840 cys of material, and pave.
3. Extend the wharf 20 feet on the eastern side-denoted by the red line.
4. Enlarge and relocate the CTC landing at the wharf level to 12x12 and relocate the landing 20 feet towards the land side. Add a new ramp 60 feet by 5 feet.
5. Purchase the Golf Club property which will add approximately 35 parking spaces
6. Costs: 1. 2. Fill is \$55,000 plus paving 23,000 sf. 3. Bulkhead 550,000 fill 57,000 4. landing 10,000 plus ramp 40,000 5. 125,000. The total 900,000-1,250,000.
7. The benefit of the above is to provide additional parking, but most importantly a loop road to access the CTC landing within 50-60 feet. Fishing access is only moderately effected (versus a 3 foot increase in the height of the wharf). Additionally, the area near the barge ramp is opened up for easier access.
8. Plan B-the green line would increase the cost of plan A by a bulkhead 60 feet longer-180,000 and additional fill costs of 426,000 but would provide probably another 35 parking places.
9. All of the above should also contemplate the use of offsite parking particularly in May to October time period.



$7/16 = 20'$   
 $7/8 = 40'$